

Technical drawing of a reinforced concrete slab (Laje) showing top and side views.

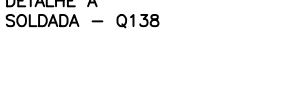
Top View:

- Overall dimensions: 264,5m (width) and 265,5m (length).
- Reinforcement: 3 N2 Ø10 C=548 (top bars) and 1 N3 Ø5 c/13 (bottom bars).
- Columns: A, B, C, D.
- Beams: 20 X 30 (top and bottom).

Side View (Corte A):

- Thickness: 12cm.
- Width: 20cm.
- Reinforcement: 3 N2 Ø10 C=548.
- Beam cross-section: 20 X 30.

DETALHE A
TELA SOLDADA - Q138



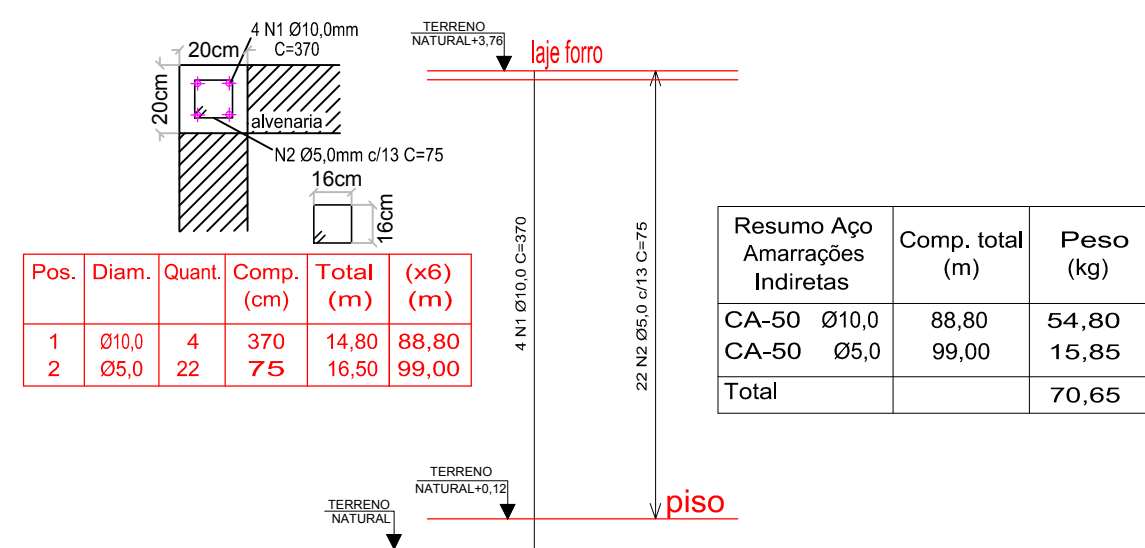
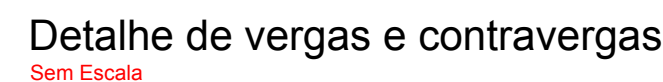
30cm
12cm
Q138
Q138



☐ BLOCO – prof 35cm (8x)



Pos.	Diam.	Q.	Dob. (cm)	Reta (cm)	Dob. (cm)	Comp. (cm)	Total (cm)	CA-50 (kg)
1	Ø10	4	30	64	30	124	496	3,06
2	Ø10	2	45	45	45	180	360	2,22
Total:								5,28
Concreto C-25							(x6):	31,68



Detalhamento do Pilar (6x)



QUANTIDADES DE AÇO PARA VIGAS DE SUPERIORES										
Elemento	Pos.	Diam.	Q.	Dob. (cm)	Reta (cm)	Dob. (cm)	Comp. (cm)	Total (cm)	CA-50 (kg)	CA-60 (kg)
VS 1 = VS 2	1	Ø10	3	12	524	12	548	1644	10,1	
	2	Ø10	3	12	524	12	548	1644	10,1	
	3	Ø5	34				100	3400		5,4
	Total:								20,20	5,90
	(x2):								40,40	11,80
VS 3 = VS 4	1	Ø10	3	12	444	12	468	1404	8,7	
	2	Ø10	3	12	444	12	468	1404	8,7	
	3	Ø5	28				100	2800		4,5
	Total:								17,40	4,50
	(x2):								34,80	9,00
Concreto C-25							Ø5:	0,0	20,80	
							Ø10:	75,20	0,0	
							Total:	75,20	20,80	

[illegible]